

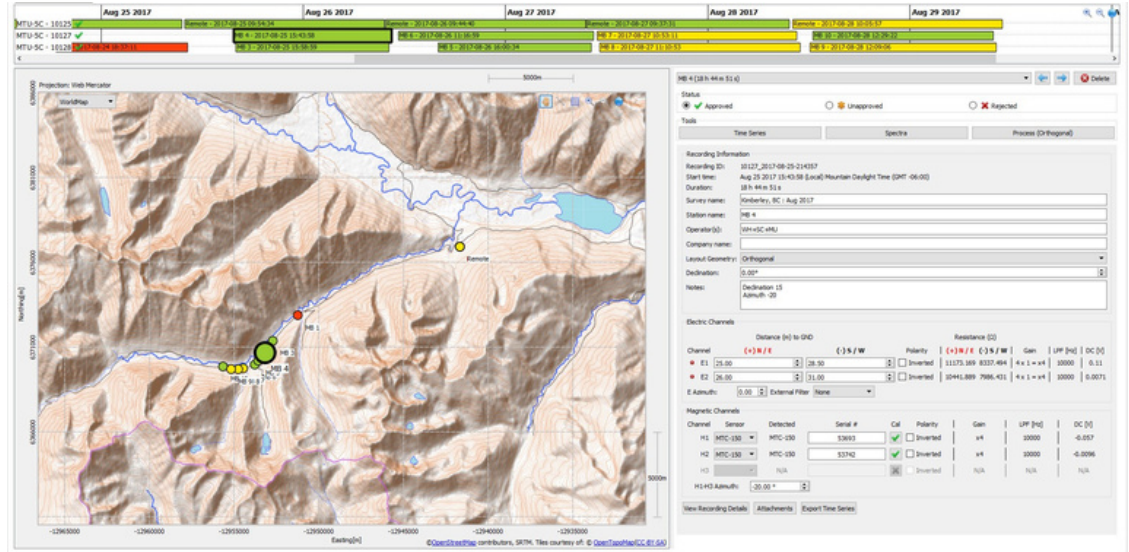


POWERFUL

# EMpower V2

ADVANCED DATA MANAGEMENT and PROCESSING

FAST  
FLEXIBLE  
INTERACTIVE



for Windows, macOS and Linux

## MAIN ADVANTAGES

Powerful database manager:

- Track survey progress
- Handle large MT and CSAMT survey datasets
- QC data and field operations
- Multi Core MT parameter calculation
- Immediate results
- Advanced editing and post processing features
- Continuous improvements

## UMT COMPATIBILITY

ULTRA-WIDEBAND MT SYSTEM



MTU-8A

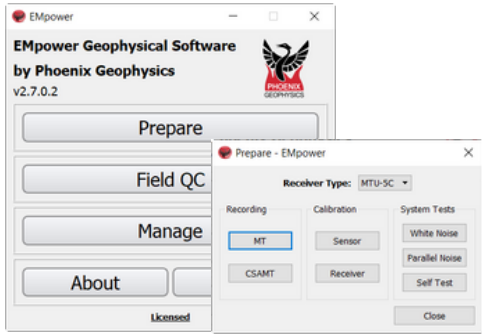
MTU-5C



MTC-100 SERIES

- Simultaneous recording of high and low bands
- MT-AMT-BMT-LP (long period)
- 10,000 Hz to >50,000 seconds

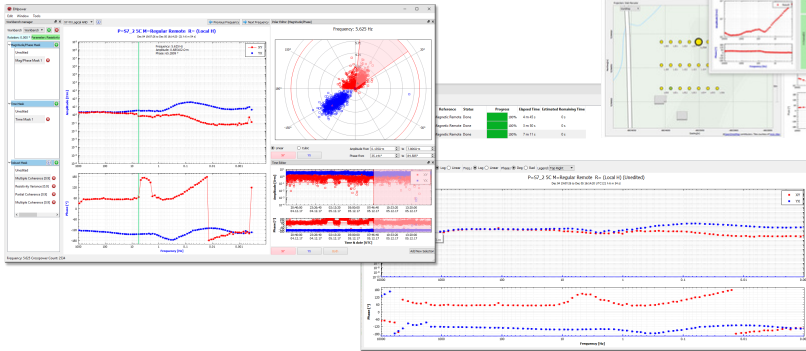
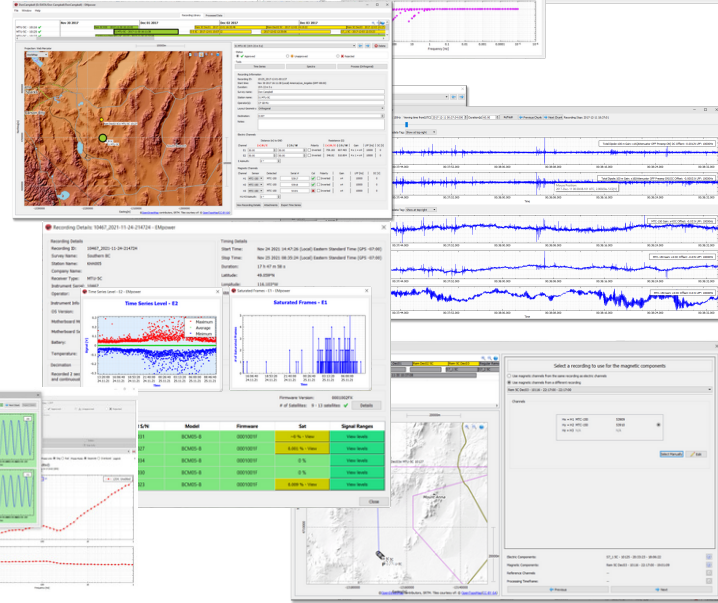
# EMpower system suite



- Simple system configuration (CSAMT/MT recording, Receiver/Sensor calibration, System tests)
- Channels set independently
- Support legacy and new sensors, and selected fluxgates
- Receiver networking configuration
- Fast, easy and visual Field and instrument QC



- Intuitive Timeline display
- Automated georeferencing of stations on Open Source Map
- Quick metadata access
- Time Series and Spectra visualization, and Time series export
- Extensive metadata access
- Easy access to the different processing stages of MT or CSAMT recordings
- Multiple, concurrent processing streams with choice of parameters
- Real-time visualization of processing progress



- Interactive data de-noising:
  - Workbench based approach to keep track of changes
  - Improved robust filtering with thousands of calculated cross-powers
  - Timeline and polar editing
- Export to EDI and other formats

## SPECIFICATIONS

### Computer Specifications

|                         |                                      |
|-------------------------|--------------------------------------|
| OS language             | English                              |
| CPU                     | 64-bit Intel i7 equivalent or better |
| RAM                     | 16 GB and up                         |
| Monitor Size            | 13" and up                           |
| Screen Resolution       | 1920 x 1080                          |
| Installation Disk Space | 200MB                                |
| Data Disk Space         | 50GB (depends on survey)             |

### Requirements

Internet connection required for initial license code authentication

USB 3.0 SD card reader (or equivalent speed) for data transfer

### Operating Systems Supported

**Windows:** Windows 10, 64-bit  
Windows 11, 64-bit  
Permissions required: Must be logged in as Administrator

**Linux:** Ubuntu 18.04, 64-bit  
Ubuntu 20.04.4, 64-bit  
Permissions required: Standard user

**Mac:** 10.15.4, "Catalina" 64-bit  
12.0, "Monterey" 64-bit (Apple silicon)  
Permissions required: Standard user account



Phoenix Geophysics Limited  
3781 Victoria Park Avenue, Unit #3  
Toronto, Ontario M1W 3K5  
Canada

Telephone: +1 416.491.7340  
E-mail: contact@phoenix-geophysics.com  
Web: www.phoenix-geophysics.com